



Woden's Liquidambar Lane

Honouring and celebrating life with Canberra Memorial Parks

We acknowledge the Traditional Custodians of the land on
which Canberra Memorial Parks stands, the Ngunnawal people.
We pay our respect to Elders past, present and emerging.



ACT
Government



Canberra
Memorial
Parks



Gungahlin Crematorium



Gungahlin Cemetery

A Guide for Family and Friends

When a loved one passes away we want to honour and celebrate their life in a way that reflects how they lived and how you want to remember them. Canberra Memorial Parks is here to help you during this time of grief and support you in taking the time you need to both reflect and plan their end-of-life arrangements with care and consideration.

We are here for grieving family and friends who need assistance in navigating the planning of a cremation or burial service. With a wide range of facilities at our Gungahlin, Hall and Woden cemeteries, you can honour your loved one with their wishes in mind.

What to do when a loved one dies

When a death occurs, one of the first things to do before speaking to us is to find out if your loved one had discussed or planned pre-existing funeral, burial or cremation arrangements (e.g. documented with their will). We can always help with the finer details when you make these important decisions.

Next, it's likely you will speak to a funeral director about your loved one's preferences as they can help facilitate the service, funeral and cremation in partnership with our Canberra Memorial Parks team, and provide the necessary documentation to carry out the arrangements.

How Canberra Memorial Parks can help

We are committed to approaching each interaction with kindness and sensitivity at a difficult time in people's lives. We are here to guide family and friends through the burial and cremation options available across our Parks in Woden, Hall and Gungahlin.

Depending on the burial or cremation service you choose for your loved one, we can accommodate various options across our cemeteries.



Gungahlin Cemetery

Honouring their life with religious and/or cultural traditions

In cultures around the world, the passing of a loved one is memorialised in different ways. Recognising the diversity of the Canberra community and respecting religious traditions is important to Canberra Memorial Parks, which is why our facilities can cater to various communities and offer an empathetic service at a difficult time.

Gungahlin Cemetery's newest facility consists of a peaceful viewing room for cremations,

where Buddhists, Sikhs and Jain families can honour their traditional practice of viewing the coffin as it enters the cremator. Families may also hire the viewing room to say their final goodbyes to their loved one before cremation.

Across the Gungahlin, Hall and Woden grounds we have dedicated religious and cultural burial areas for Islamic, Jewish, Orthodox, Aboriginal and Christian communities, and an enclosed mausoleum at the Woden Cemetery.



Gungahlin Cemetery



Woden Cemetery

How can I discuss my loved one's wishes with family, friends and those who knew them?

We understand that this time is difficult for family and friends particularly if it was an unexpected death or this is the first time you have had to make these arrangements. At Canberra Memorial Parks, we help facilitate this conversation with your extended family by providing easy to understand information, that you can share and discuss with them. We encourage caring, thoughtful conversations between family members and friends on how best to honour your loved

one's life and strive to ensure their intentions and wishes are respected in the process.

Having a conversation with your family and friends on how your loved one wants to be remembered can help you mourn together and celebrate their life. Whether your loved one is a relative, a child, a friend or a close relation, you can plan the memorialisation that they deserve, and Canberra Memorial Parks can assist in every part of the process.

Cremation or burial - what options are available in Canberra?

The Canberra community has a wide range of memorialisation options for burial, interment and cremation across three beautiful public parks, all with their own distinct features to choose from. Whether your loved one stated their wishes in their will or you are unsure of their preference, we have provided a summary of the various options and locations so you can make an informed decision.

When someone close to you passes away, we believe in not rushing the process and taking

time to make informed decisions about that person's options. We encourage you to book a visit to see our facilities and talk to our kind, empathetic staff who will guide you through our services based on:

- your loved one's cultural and/or religious customs
- consciousness of environmental impact
- costs associated
- your loved one's stated wishes and ideal resting place.



Woden Cemetery

Burial

Canberra Memorial Parks offers a wide range of options at Gungahlin, Hall and Woden cemeteries, including family estate, headstone, lawn allotment or natural burial. With a burial, your loved one can be memorialised in a place that you and your family can visit. If your loved one wished to be buried with family members or relatives that have already passed, most grave allotments can be dug to double or triple depth as required.



Family Estate

Location: Gungahlin

A Family Estate consists of a garden bed with a tree planted in the centre, with families permitted to have small plantings in the shared garden behind their allotment. The garden is bordered by four concrete beams forming a square. There are eight lawn graves in total around the outer edge of the square, and they are purchased in pairs. Family Estate allotments for ashes are available.



Headstone Allotment

Locations: Gungahlin and Woden

A Headstone allotment is a grave which has a full monumental memorial, usually made of granite or marble, which covers the entire length of the grave.



Lawn

Location: Woden

A Lawn allotment is a lawn grave, with memorialisation by way of a chrome or bronze plaque installed on a raised concrete block at the head of the grave. A memorial plaque, cement base with vase, and raised concrete block are included in the cost of the allotment. An upgrade to a raised granite block can be purchased.



Monumental Lawn

Location: Gungahlin

A Monumental Lawn allotment is a lawn grave, with memorialisation by way of a small headstone on the concrete beam at the head of the grave.



Natural Burial

Location: Gungahlin

Natural burials have no memorialisation at the grave location. A small shrub chosen by the family from a list of approved natives can be planted at the grave location by cemetery staff. The intent is for graves to blend into the beautiful surrounding of bushland. By choosing a natural burial, people are choosing a burial method that has a lower environmental impact, allowing the remains to decompose sustainably and return back to nature.



Plaque Beam

Locations: Gungahlin and Woden

A Plaque Beam Allotment is a lawn grave, with memorialisation by way of a large plaque installed flush on the exposed aggregate beam at the head of the grave.



Woden Cemetery

Tree

Locations: Gungahlin and Woden

Tree allotment is an ashes grave, with memorialisation by way of a large plaque installed flush to a granite block. The block is positioned at the base of a tree and inset into the ground. Tree allotments have two purchase options - an individual tree or a shared tree. An individual tree option has provision for a family to have up to six ashes interments and plaques, with the first being included in the cost of the allotment. The shared tree allotment is for one ashes interment and one plaque on a granite block.



Woden Cemetery

Vault

Locations: Gungahlin and Woden

A Vault allotment is a headstone grave that has a sealed, double-depth, concrete crypt installed within the allotment. The memorialisation is by way of a full monument covering the entire length of the grave.



Christ the Redeemer Mausoleum

Location: Woden

Christ the Redeemer is a unique mausoleum surrounded by large, noble trees. The mausoleum comprises a dedicated chapel area and secure internal and external burial crypts, including family vaults, double and single crypts, and for interred cremated remains, columbarium niches.

Cremation

Cremation services have risen in popularity in the past decade, attributed to factors like cost, reducing people's carbon footprint and the options available for interment of ashes. Research suggests the practice of cremation dates back at least 17,000 years ago and today is more common than traditional burials in Australia.

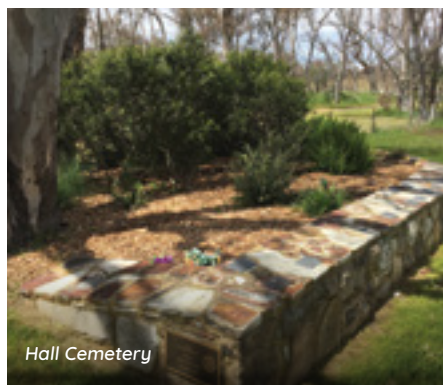
Our modern technology and practices at Canberra Memorial Parks ensure the deceased are always handled with care and respect. The identification of your loved one's remains is guaranteed from the time their body is delivered to the crematorium by the funeral director through to the interment of ashes, which are the fine bone fragments that remain after they have been cremated.

Returning ashes to the family

If you have decided that you would like their ashes to be with family or scattered in a place of personal significance, like the town in which they were born or near other relatives buried outside the ACT, Canberra Memorial Parks can assist with this request. We can arrange for your loved one's ashes to be returned to you and your family. We encourage you to contact your local council if their remains are to be scattered in a public place as permission is normally required. If it is on private land, then you must obtain permission from the owner, unless the land is yours.

Burying the ashes at Canberra Memorial Parks

Cremated remains can be interred in a designated area in Woden, Hall and Gungahlin cemeteries' Memorial Gardens areas.

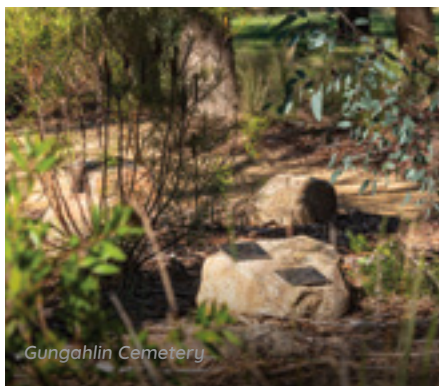


Hall Cemetery

Memorial Gardens

Locations: Gungahlin and Hall

A Memorial Garden allotment is an ashes grave, with memorialisation by way of a plaque installed on the kerb bordering the Memorial Garden. Only one set of ashes can be interred in a Memorial Garden allotment.



Gungahlin Cemetery

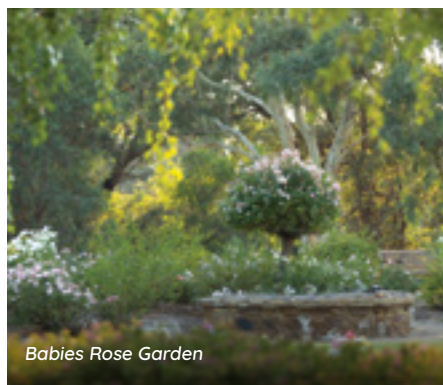
Memorial Rock

Locations: Gungahlin and Woden

A Memorial Rock allotment is an ashes grave, with memorialisation by way of a plaque installed on a rock, which is positioned in a garden bed. Standard Memorial Rocks have provision for two sets of ashes and two memorial plaques. A Family Memorial Rock can accommodate up to four sets of ashes and four memorial plaques.

Remembering your child with compassion and care at Canberra Memorial Parks

At Canberra Memorial Parks, we understand that memorialising your child is a monumental part of grieving and saying your goodbyes. To help you to honour and celebrate your child's life, we have dedicated gardens for families to peacefully reflect at both Woden and Gungahlin cemeteries.



Babies Rose Garden

Babies Rose Gardens

Babies Rose Garden allotments are designated areas for babies born before 20 weeks gestation in the Woden and Gungahlin cemeteries. Families may memorialise their child with a plaque placed on the rock wall which borders the rose garden. A burial or the interment of ashes can take place seven days of the week. A memorial plaque is included in the cost of an allotment.



Children's Garden

Children's Garden

The Children's Garden is a designated area for children up to and including the age of 12 in Gungahlin and Woden cemeteries. A Children's Garden allotment is a lawn grave, with memorialisation by way of a small headstone and/or plaque on the concrete beam at the head of the grave. A burial or the interment of ashes can take place seven days of the week.

Where can my loved one be buried in the ACT?

Canberra Memorial Parks manages three beautiful parks across the ACT in Woden, Gungahlin, and Hall with their own unique features that you can explore in the following section or book a tour with our customer service team to visit.



Gungahlin Cemetery's Ornamental Lake

Gungahlin

The Gungahlin Cemetery was opened in 1979 and is extensively landscaped with a large lake and many bird species that create a tranquil and peaceful environment. Separate attractive areas are provided for lawn and monumental burials and for placing of your loved one's ashes.

It is also the home of the Gungahlin Crematorium, ACT's first publicly owned crematorium which was opened in 2021.



Woden Cemetery's Liquidambar Lane

Woden

The Woden Cemetery was opened in 1936 and is a formally planned cemetery, with many stately mature trees and lawn and monumental burial sites in many different religious and general areas. Our enclosed mausoleum, Christ the Redeemer is also located in the grounds.

The cemetery is accessible all year round and the public is welcome to explore and enjoy the grounds. It is within walking distance from the Woden Bus Interchange.



Hall Cemetery Headstones

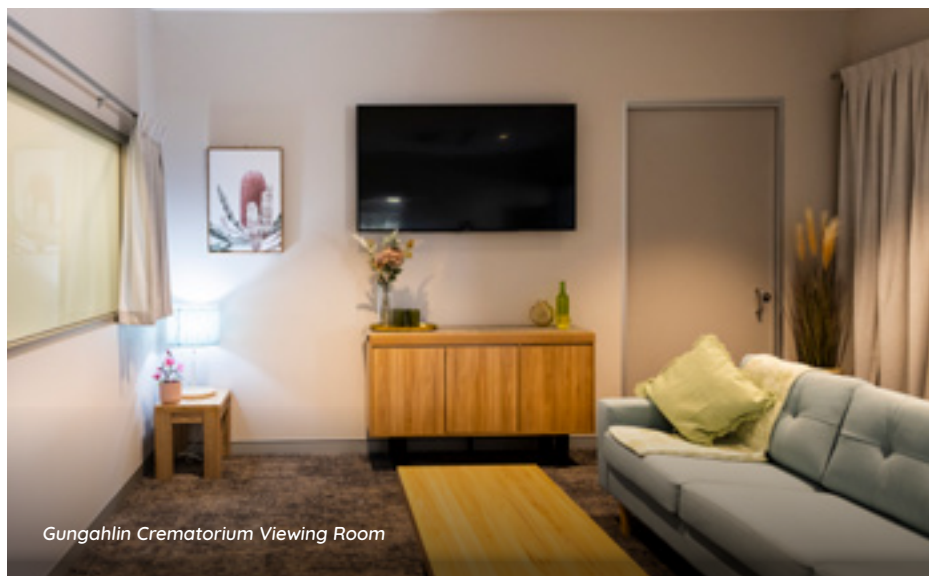
Hall

Hall Cemetery is the oldest cemetery in the ACT, dedicated in 1883, with the first recorded burial in 1907. It is a small rural cemetery, mainly for long-time residents of the Hall region. It is divided into religious denominations and a special memorial wall and garden for cremated remains are available for the interment of ashes.

The Hall Cemetery contains some very rare and endangered plants so mowing the grass is not possible in the Spring and early Summer, allowing the plants to flower and seed.

What type of funeral can I arrange for my loved one?

Your chosen funeral director will help you plan the funeral service. Canberra Memorial Parks can host a range of services that your funeral director can book, as explained in this section.



Viewing Room

Location: Gungahlin

A dedicated viewing room allows mourners to watch the cremation and participate in religious ceremonies. The viewing room can seat up to 25 people. Cameras in the viewing room and the crematorium room can broadcast and record the process if family members or loved ones are not able to attend. Families may also hire the viewing room to say their final goodbyes to their loved one before cremation.

Stringybark Room

Location: Gungahlin

The Stringybark Room is available for hire for a memorial service, which includes set up of the room and audiovisual equipment. When making an appointment with us, let our customer service team know if you would like a tour of the room.

Grave Service

At Canberra Memorial Parks, we can facilitate a graveside service to commemorate your loved one. This might be after a religious service or in lieu of a church ceremony.

Environmentally conscious practices at Canberra Memorial Parks

Natural burials and cremation have a lower environmental impact than traditional burial practices. At Canberra Memorial Parks, we are proudly one of 1250 crematoria worldwide that participate in a recycling program with OrthoMetals. OrthoMetals was founded in 1997, by a surgeon and his business partner, to recycle metals remaining after cremation from medical devices, like titanium hips, dental work and jewellery.

The funds generated from this program will be returned to Canberra Memorial Parks in the future to support local community projects that align with the vision of the Parks.

Please contact us for more information about our sustainable practices.



Gungahlin's Natural Burial Section

Book an appointment

At Canberra Memorial Parks, our customer service team can help you through the process as best we can when you are planning a burial, cremation, service or funeral. You can contact us to book an appointment via phone, email or via our website to discuss your loved one's options.

P (02) 6207 0000

E canberramemorialparks@act.gov.au

canberramemorialparks.act.gov.au



ACT
Government



Canberra
Memorial
Parks

We acknowledge the Traditional Custodians of the land on which Canberra Memorial Parks stands, the Ngunnawal people. We pay our respect to Elders past, present and emerging.